

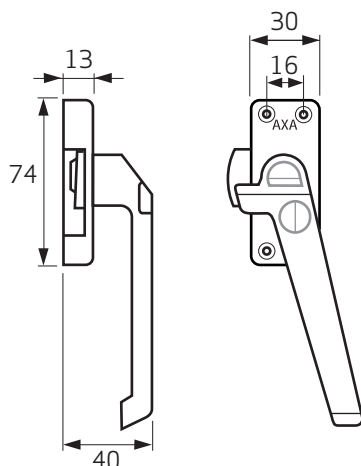

AXA HOME SECURITY

EN

Window fastener 3302 / 3308 / 3309

Information

You have just acquired a high quality AXA product. The instructions below must be followed closely in order to effectively install and operate this product.



Application

Windows and doors.

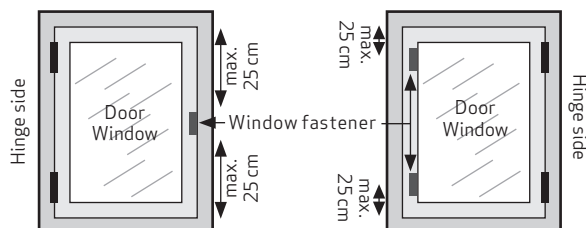
Installation tools (recommended)

Tape measure, (battery) drill, screwdriver, drill Ø 2,5 and 3 mm, bradawl/pencil.

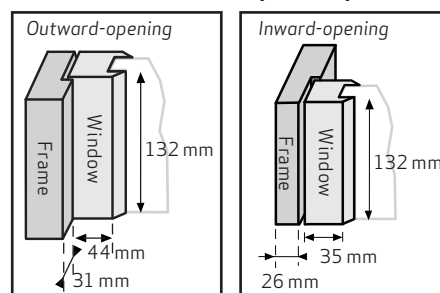
Recommended fasteners: 4,0 x 40 mm, 4,0 x 20 mm or 3,5 x 20 mm

Mounting position

left or right



Minimum installation space required



User manual

3302 Open

Turn handle horizontally.

Close

Turn the handle vertically.

3308 Open

Press the push button (1), turn handle horizontally (2).

Close

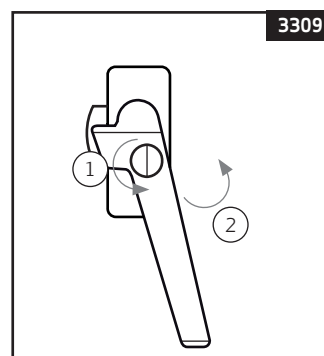
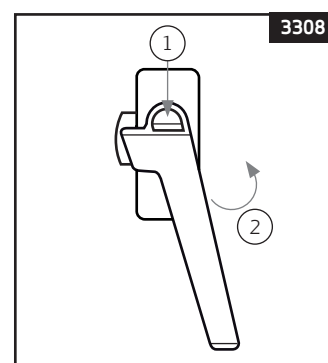
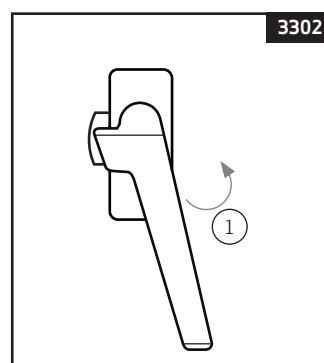
Turn the handle vertically.

3309 Open

Unlock with the key (1), turn handle horizontally (2).

Close

Turn the handle vertically, vergrendelen met de sleutel.




AXA HOME SECURITY

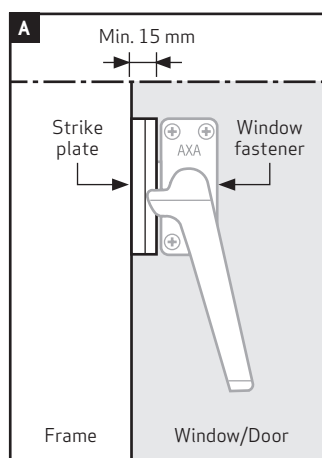
EN

Window fastener 3302 / 3308 / 3309

Installation manual

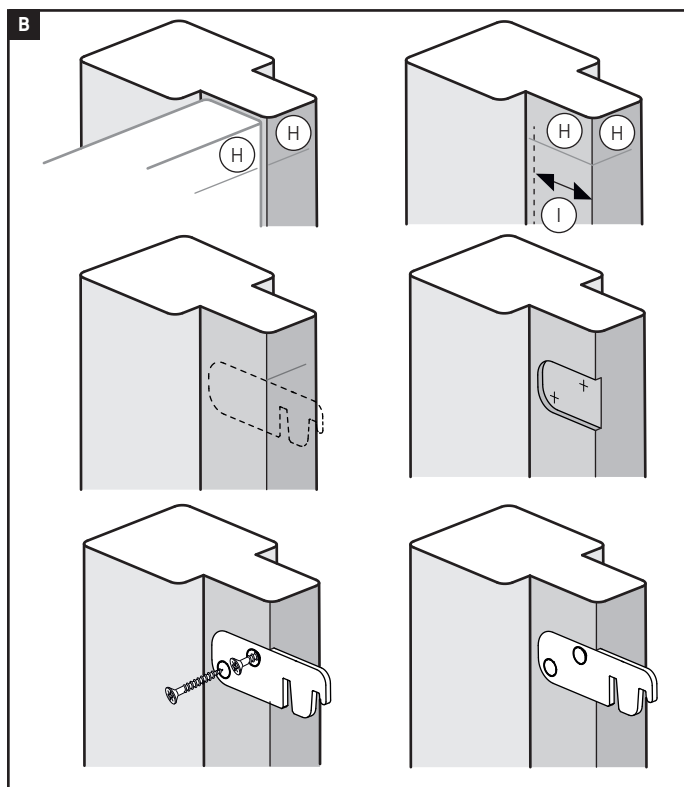
For outward-opening window or door.

- 1 Close the window properly.
- 2 Place the window lock on the window and keep a 15 mm gap between the frame and the window lock. (figure **A**).
- 3 Mark the screw holes.
- 4 Mount the window fastener with 4 screws 4.0 x 40 mm (pre-drill Ø 3 mm).
- 5 Open the window and place the strike plate at the same height as the window latch.
- 6 Mark the screw holes.
- 7 Mount the strike plate with 2 screws 4.0 x 20 mm (pre-drill Ø 3 mm).



For inward-opening window or door.

- 1 When the front of the window is flush with the frame, Then mark (I) 37 mm from the front of the window frame. If the window is set deeper than the frame, add this difference to the 37 mm.
- 2 Keep the end hook on the marked lines (H) and (I) (figure **B**) on the frame and mark outline of the end hook with a pencil.
- 3 Cut away the marked wood to a depth of 2 mm. Use a 10 mm drill bit for the rounded corners.
- 4 Secure the end hook with two 3.5 x 20 mm screws (pre-drill Ø 2.5 mm).



Installing additional locks on a door.

Please note that when installing window locks on a door for additional security or to prevent the door from warping, you must install the window locks with the lever facing upwards ("upside down") on the door. This prevents a pet or small child from accidentally closing the window lock when you are outside and the door is closed, a pet or small child accidentally closes the window lock and your door can no longer be opened from the outside.