


AXA HOME SECURITY

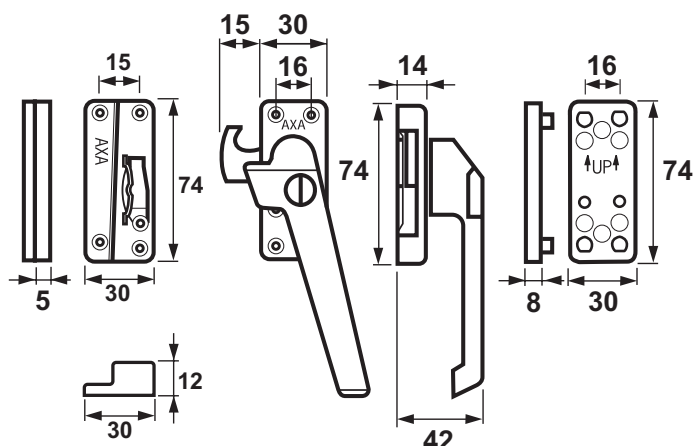
NL
SKG
**POLITIE
KEURMERK
VEILIG
WONEN**

Window fastener 3318*/3319/3320 with surface-mounted striker

* Quality marks do not apply to window lock 3318.

Informatie

You have just acquired a high quality AXA product. The instructions below must be followed closely in order to effectively install and operate this product.



Application

Outward opening doors and windows

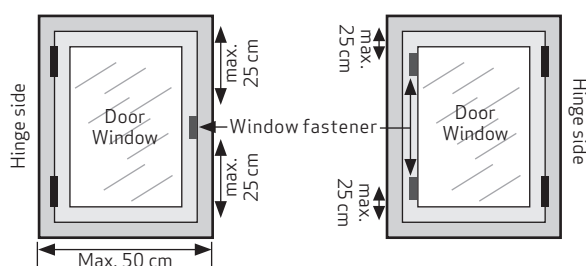
Installation tools (recommended)

Tape measure, (battery) drill, screwdriver, drill Ø 2 mm, bradawl/pencil.

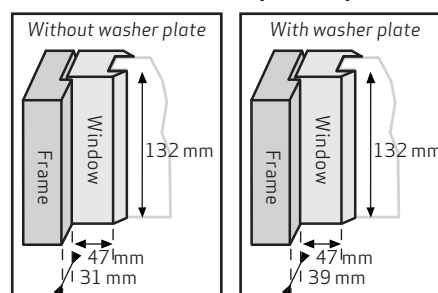
Recommended fasteners: 4,5 x 55 mm, 4,0 x 40 mm or 4,0 x 50 mm.

Mounting position

left or right



Minimum installation space required



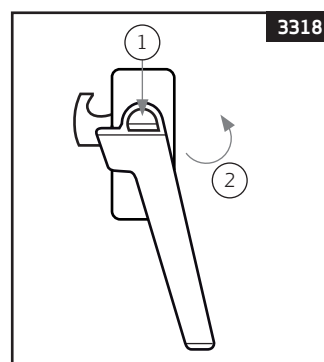
User manual

3318 Open

Press the push button (1), turn handle horizontally (2).

Close

Turn the handle vertically.

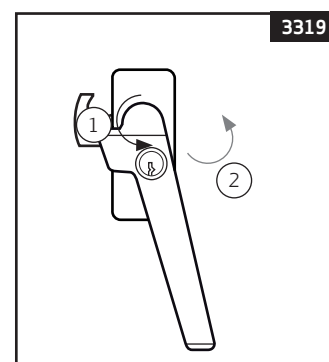


3319 Open

Unlock with the key (1), turn handle horizontally (2).

Close

Turn the handle vertically, lock with the key.

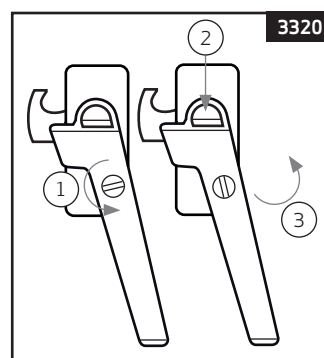


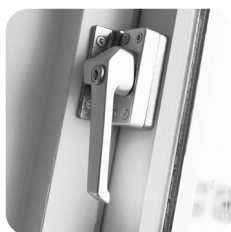
3320 Open

Unlock with the key (1), press the push button (2), turn handle horizontally (3).

Close

Turn the handle vertically, lock with the key.




AXA HOME SECURITY

NL


Window fastener 3318*/3319/3320 with surface-mounted striker

* Quality marks do not apply to window lock 3318.

Installation manual

Preparations

Decide whether you want to install the window lock with or without a washer plate (2). Take the drilling template (8) and fold it along the fold lines (2x) towards the front. For installation with a backing plate, use drilling template 1.



Mounting with washer plate (figure A en C) when:
 - there is a chance that the glass will be screwed on
 - this is necessary for the distance to the strike plate
 This is only possible with a minimum frame style width of 39 mm.

For installation **without** a washer plate (figure B) use drilling template 2.

- 1 Close the window and place plate 2 of the drilling template on the inside of the window in the position where you want to place the window lock.
- 2 Make sure that for a left-hinged window (figure D) plane 3 is against the frame and for a right-hinged window (figure E) plane 1 is against the frame
- 3 Mark the screw holes in plane 2 (window). At drilling template 1: Make use of the holes (II) and (III) (figure F). If there is a possibility that the glass will be screwed on, use the holes (II) and (IV) or (III) and (IV) gebruiken (figure F).
- 4 Mark the screw holes in plane 1 and 3 (frame).

Mounting washer plate

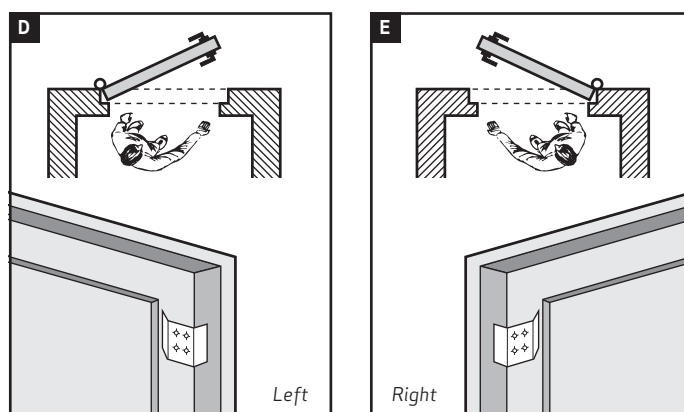
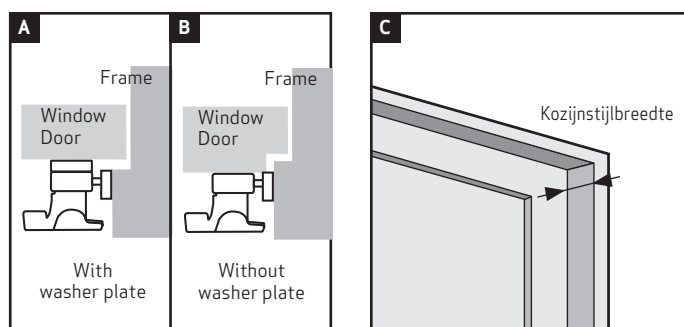
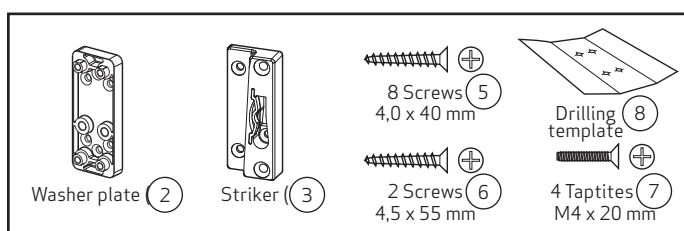
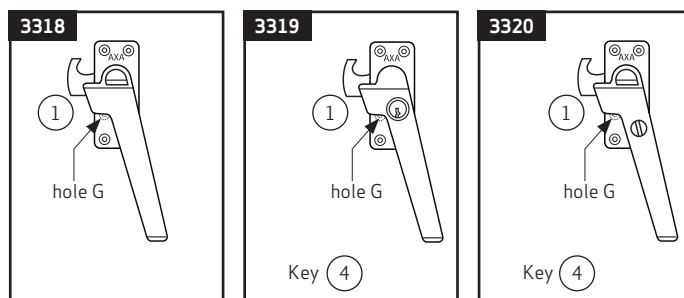
Mount the washer plate (2) to the window using screws (5) (4,0 x 40 mm) (pre-drill Ø 2 mm).

Mounting window fastener

- 5^A With washer plate** (figure A): Place the window fastener (1) on the washer plate (2) screw it in place with the 4 taptites (7) (figure F), tightening the last few turns by hand. Open the window fastener and screw the window fastener in place with screw (5) in hole G (pre-drill Ø 2 mm).
- 5^B Without washer plate** (figure B): Mount the window fastener with 4 screws 4,0 x 50 mm (not included) on the window (pre-drill Ø 2 mm). Open the window fastener and screw the window fastener in place with screw (5) in hole G (pre-drill Ø 2 mm).

Mounting striker

- 6** Screw the striker (3) with screws (5) (3 pieces 4,0 x 40 mm) and (6) (2 pieces 4,5 x 55 mm) onto the frame (pre-drill Ø 2 mm).



Install additional locks on one door.

Please note that when installing window fasteners on a door for extra security or to prevent the door from warping, you must install the window fasteners with the handle facing upwards ("upside down") on the door. This prevents a pet or small child from accidentally closing the window fastener when you are outside and the door is closed, making it impossible to open the door from the outside.

