


**AXA** HOME SECURITY

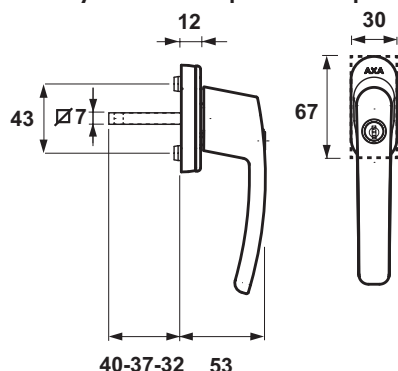
**EN**


# Security tilt-and-turn window handle

with additional night ventilation mode

## Information

You have just acquired a high quality AXA product. The instructions below must be followed closely in order to effectively install and operate this product.



### Application

Tilt-and turn window

Recommended fasteners

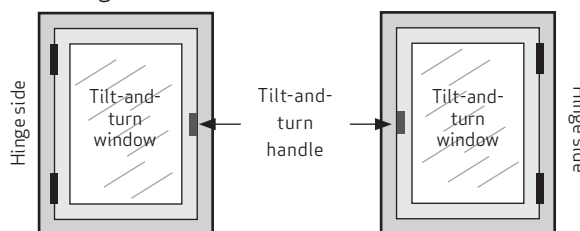
### Installation tools (recommended)

Screwdriver

spindle length	bolt size
32 mm	M5 x 40 mm
37 mm	M5 x 45 mm
40 mm	M5 x 50 mm

### Mounting position

left or right



## User manual

### Open type 90°

Rotate the handle horizontally ① (90°) in the **pivot window position**, the window can be opened as a **pivot window**. Turn the handle upwards ① + ② + ③ (180°), the window can be opened as a bottom-hung window.

### Close type 90°

Turn the handle vertically downwards.

### Open type 45° 90°

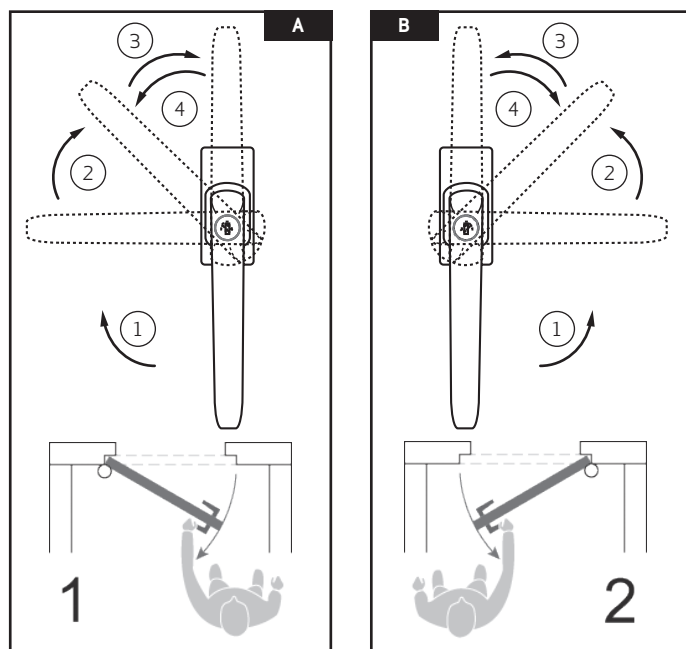
Rotate the handle horizontally ① (90°) in the **pivot window position**, the window can be opened as a **pivot window**. Turn the handle diagonally upwards ① + ② (90° + 45°), the **bottom-hung window** can be opened 7 mm as **night ventilation mode**.

Turn the handle upwards ① + ② + ③ (180°), set the window to the desired **ventilation position** and turn the handle back to an upward angle ④ (-45°) to lock the window.

### Close type 45° 90°

From the **pivot window position** and **night ventilation mode**, turn the handle vertically downwards.

From the **ventilation position**, turn the handle vertically upwards and then turn the handle vertically downwards.



## Installation manual

### For inward-opening tilt-and-turn windows.

- 1 Make sure the window is closed and locked.
- 2 Place the tilt-and-turn window handle on the window with the handle pointing downwards. Make sure that the handle can be turned to the right for a right-turning window (figure **A**) and to the left for a left-turning window (figure **B**).
- 3 Turn the aluminium cover plate 90° to the left or right so that the mounting holes are exposed.
- 4 Install the turn-tilt window handle with 2 bolts ⑤.
- 5 Cover the mounting bolts by turning the aluminium cover plate back to the vertical position so that the AXA logo is visible.

